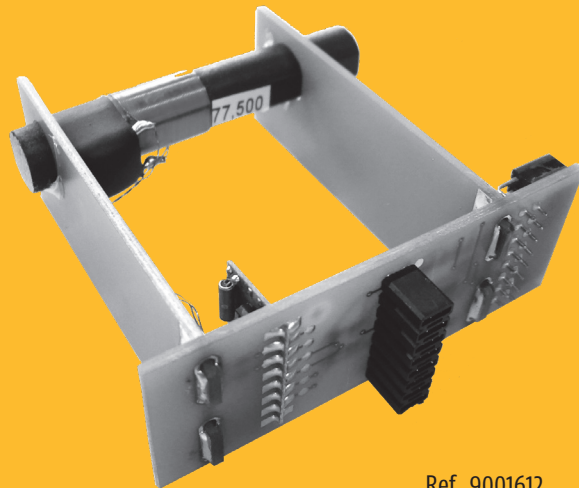


animeo® IB+ DCF Module



Ref. 9001612

somfy®

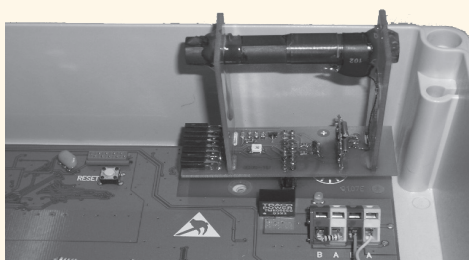
1

Characteristics

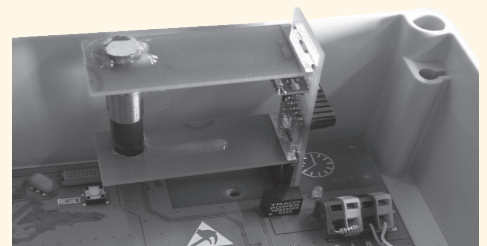
Module to be integrated in the animeo® IB+ Outside Sensor Box, Ref. 9001606

2

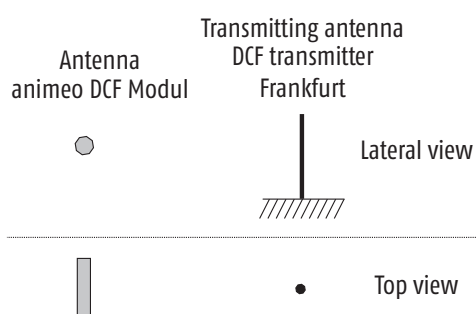
Installation



oder



Antenna orientation in relation to the time-signal transmitter in Frankfurt
(Reception radius around Frankfurt 1.000 - 1.500 km).

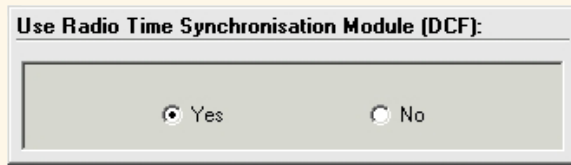


The reception quality is heavily dependent on the installation spot of the Outside Sensor Box.

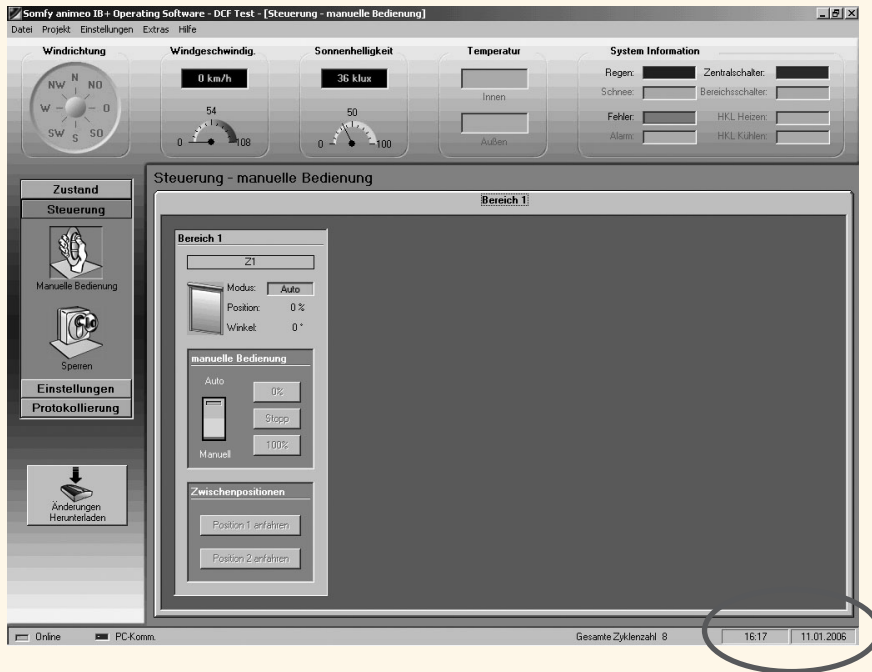
3

Configuration

Enable the module via the system software for the animeo IB+ system via the Compact PC software or the Operating Interface for the animeo Compact system.

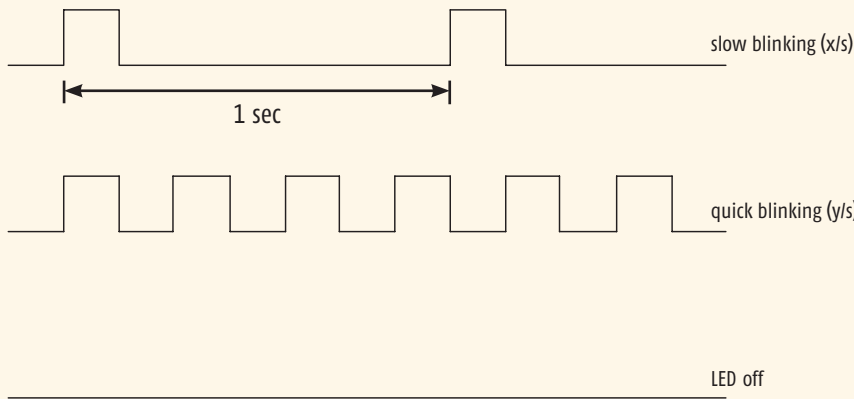


Time synchronisation takes place after approx. 3 minutes.



The current DCF time will be displayed in the Operating software.

LED indication on the DCF Module



Receiving

Error
See indication on your user interface

DCF Module stand-by

The module switches itself active once per hour